

# Sougwen Chung

AI Tech+Art



趙佳禾 2021.4.20





**Sougwen(愫君) Chung**

artist & (re)searcher

based in New York / London / Basel.

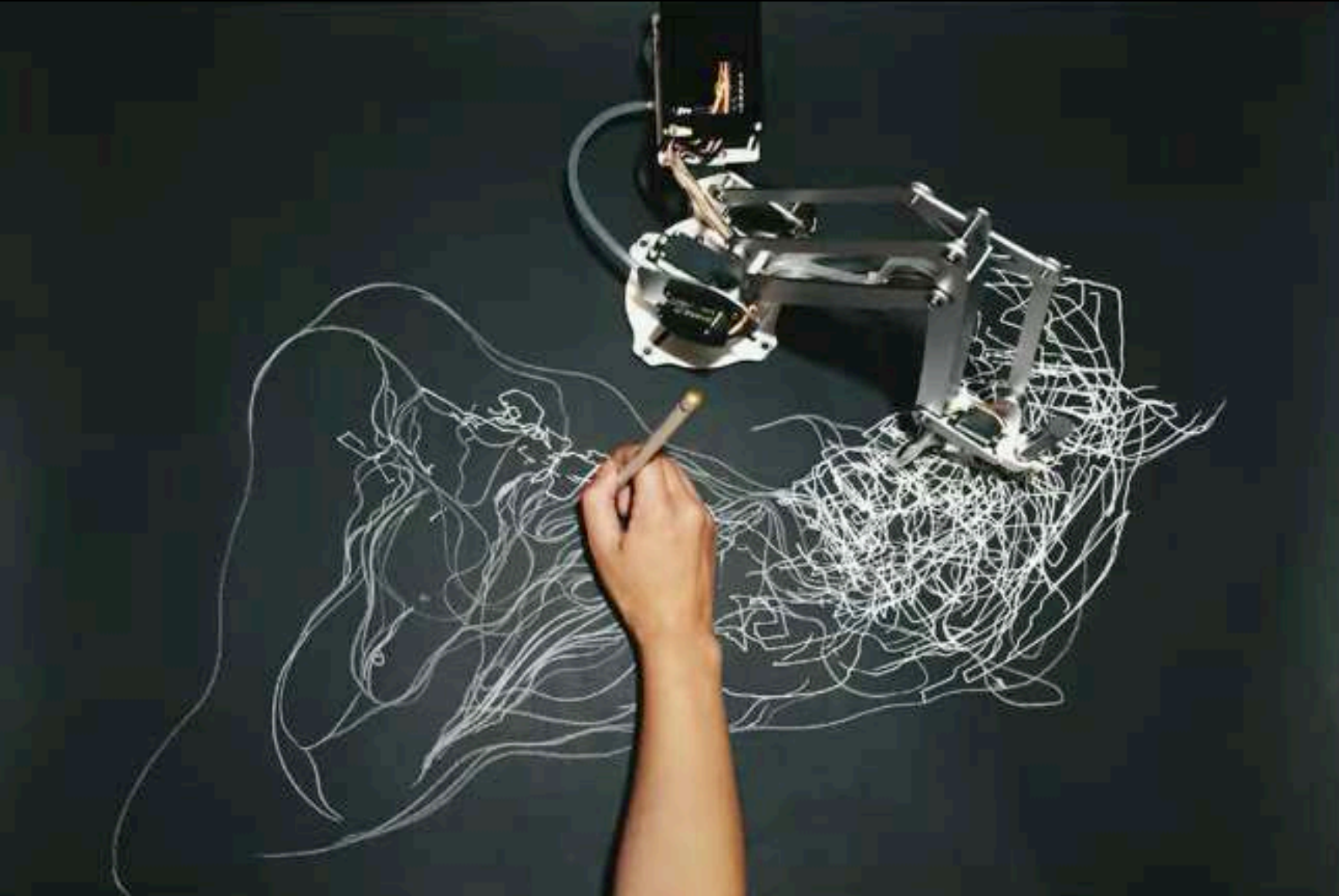


“我们正在创造未来的新型混合感知，  
这是我们从未经历过的。”

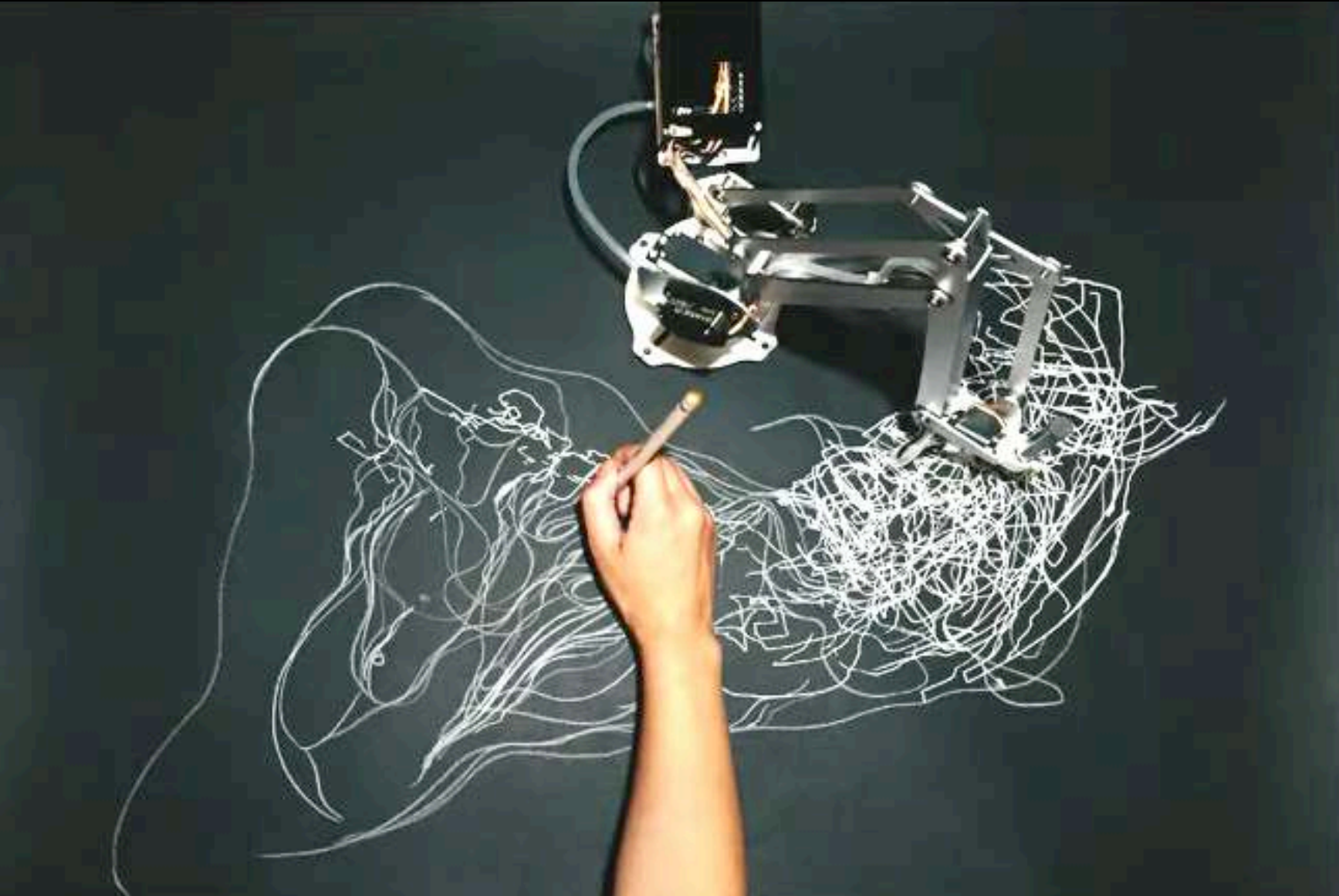
Drawing Operations Unit Generation\_1-2-3

D.O.U.G. 1-2-3



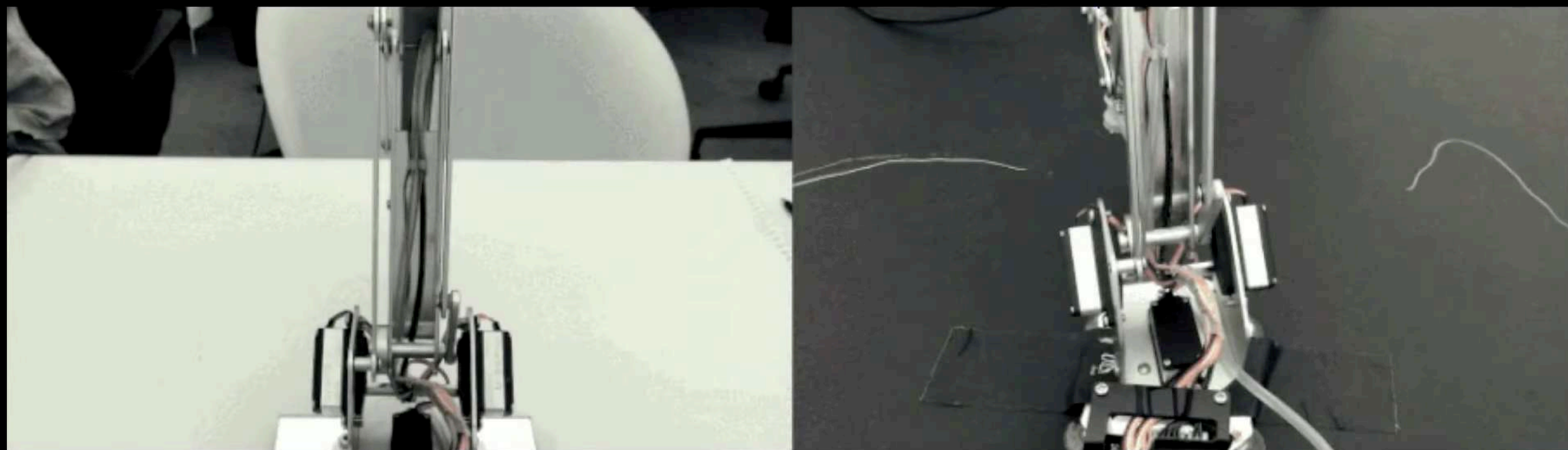






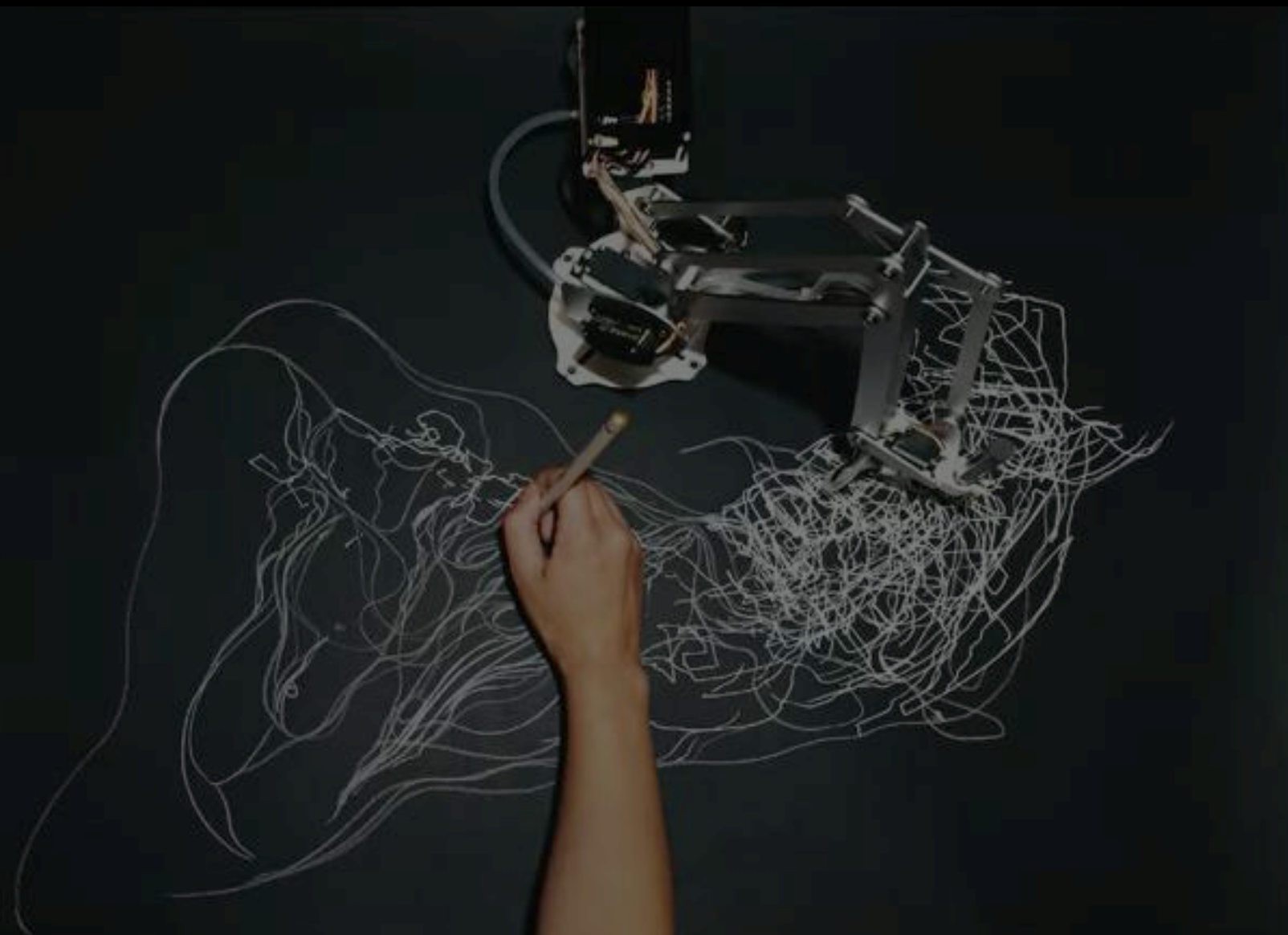


# Drawing Operations Unit Generation\_1









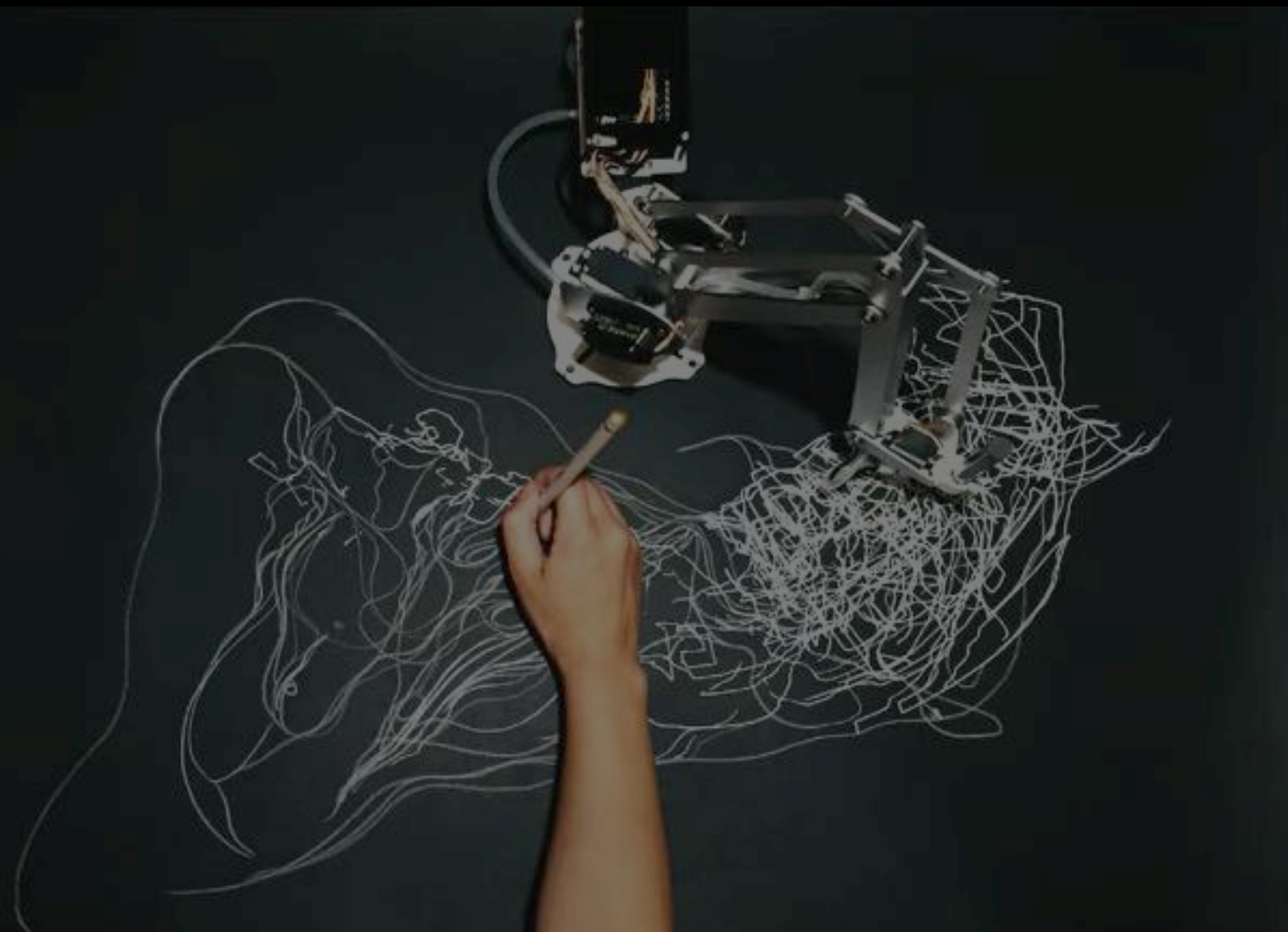


# Drawing Operations Unit Generation\_2







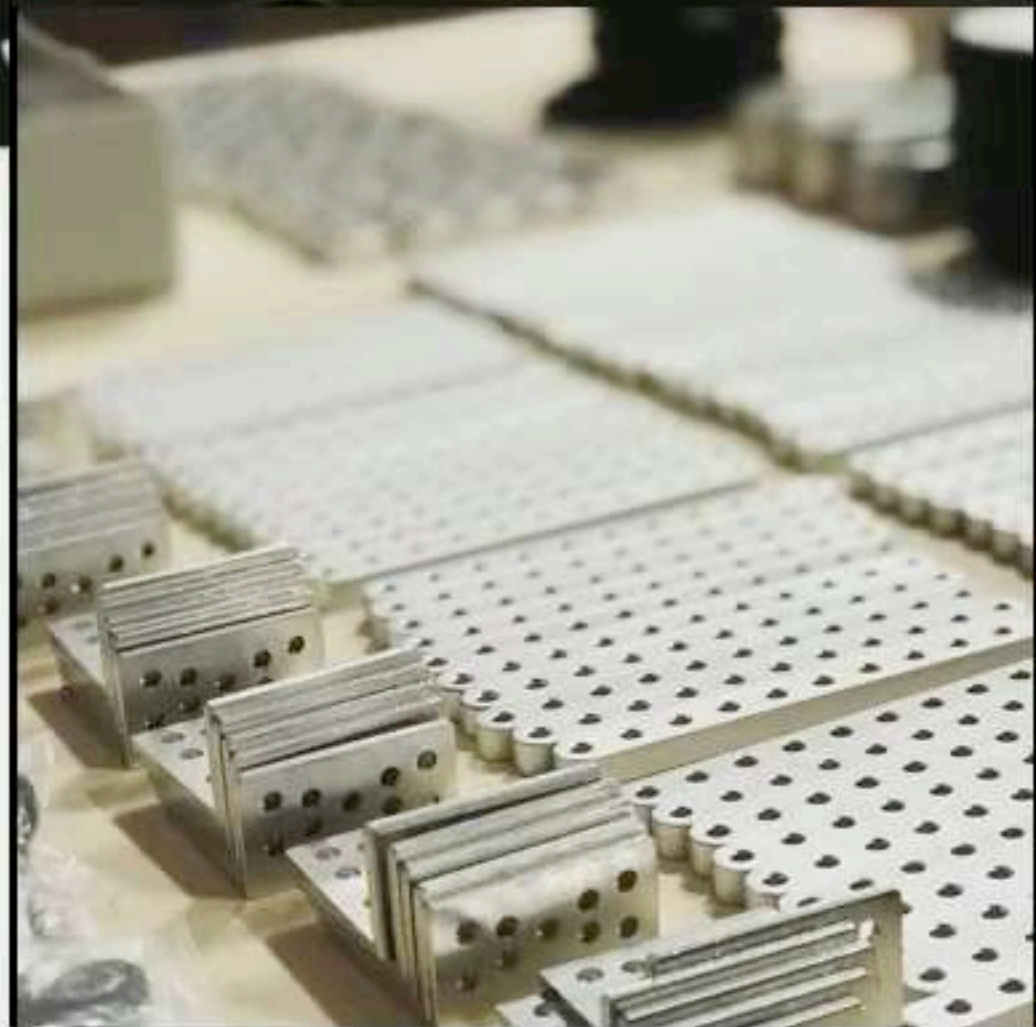
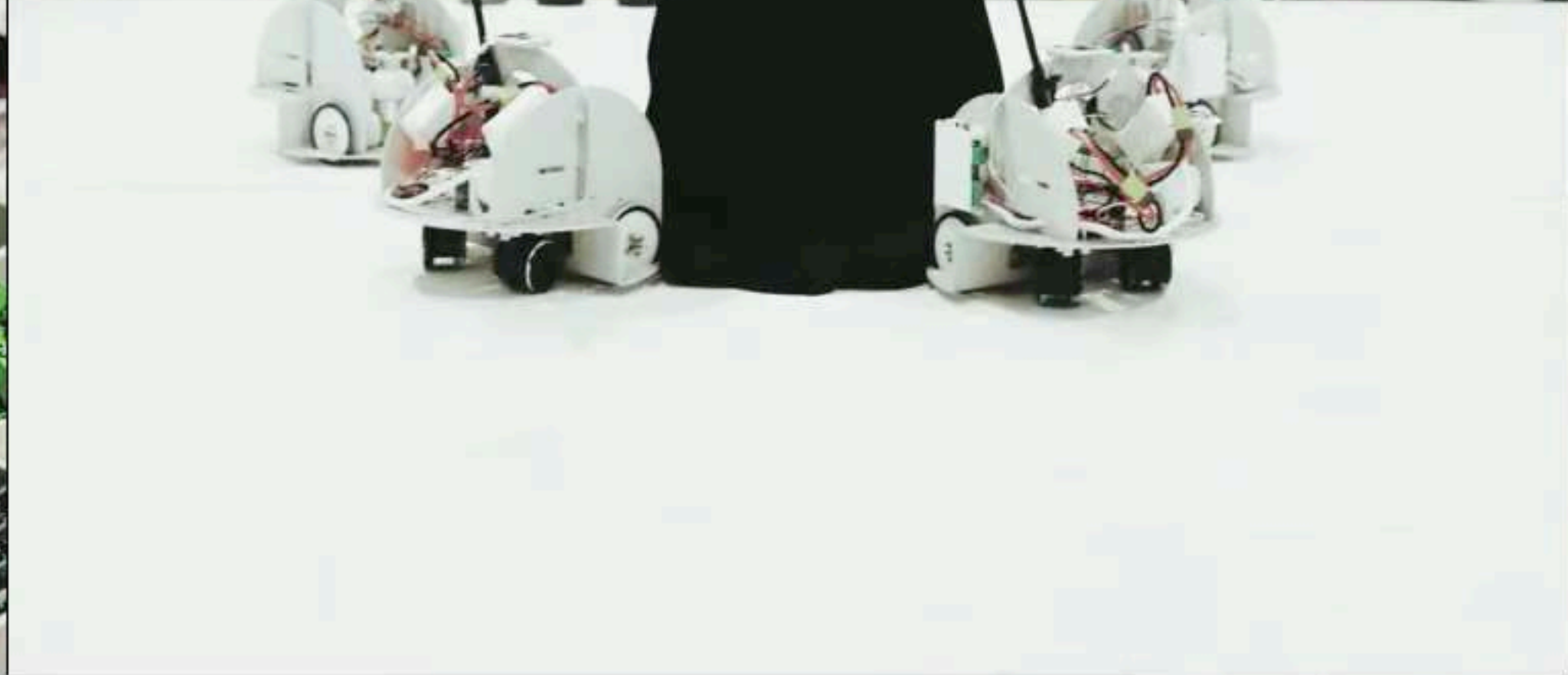
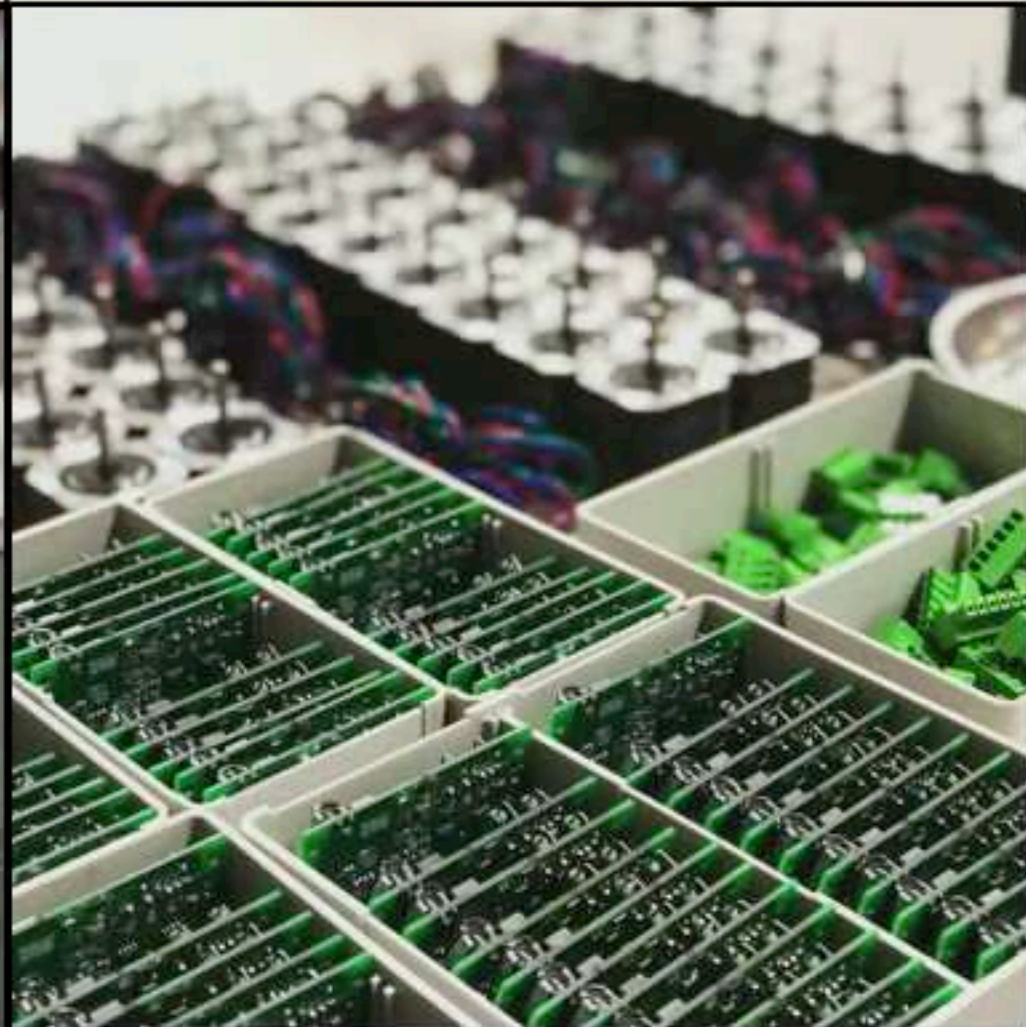
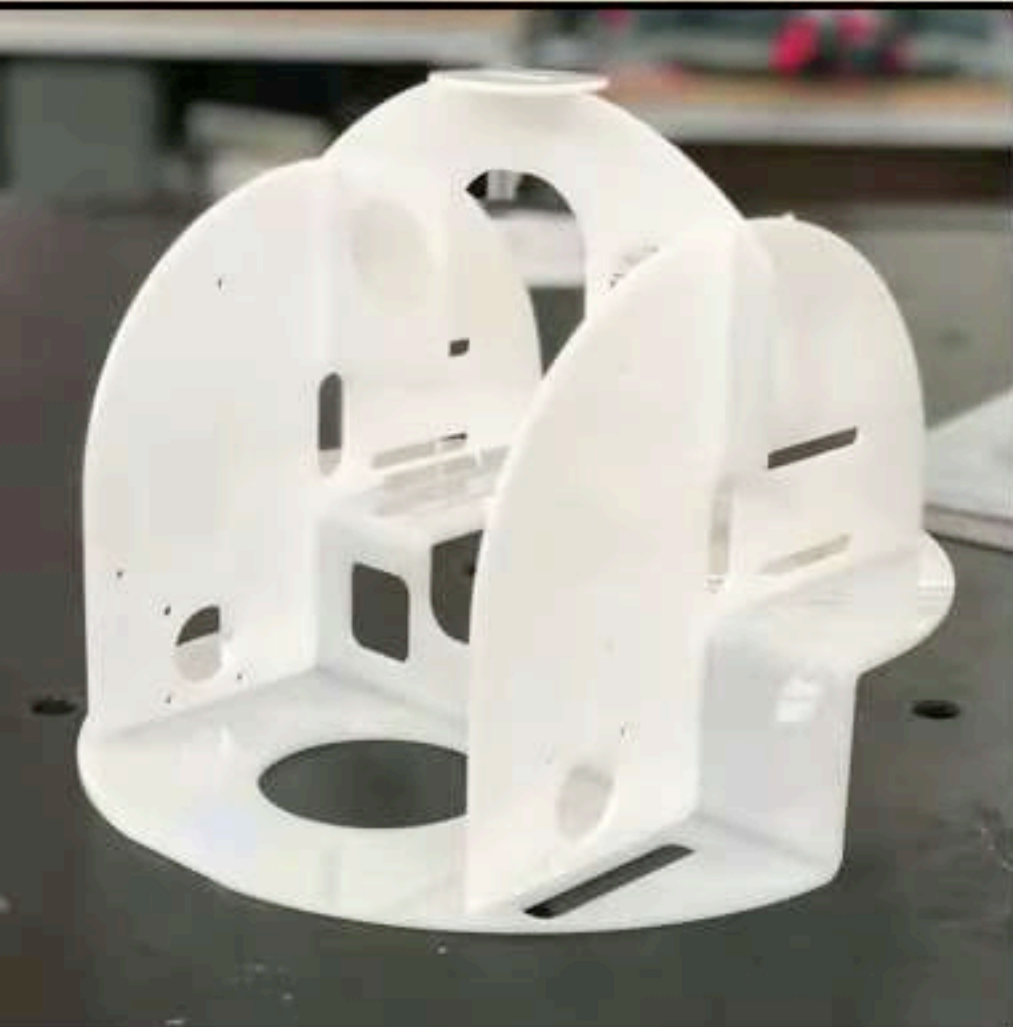
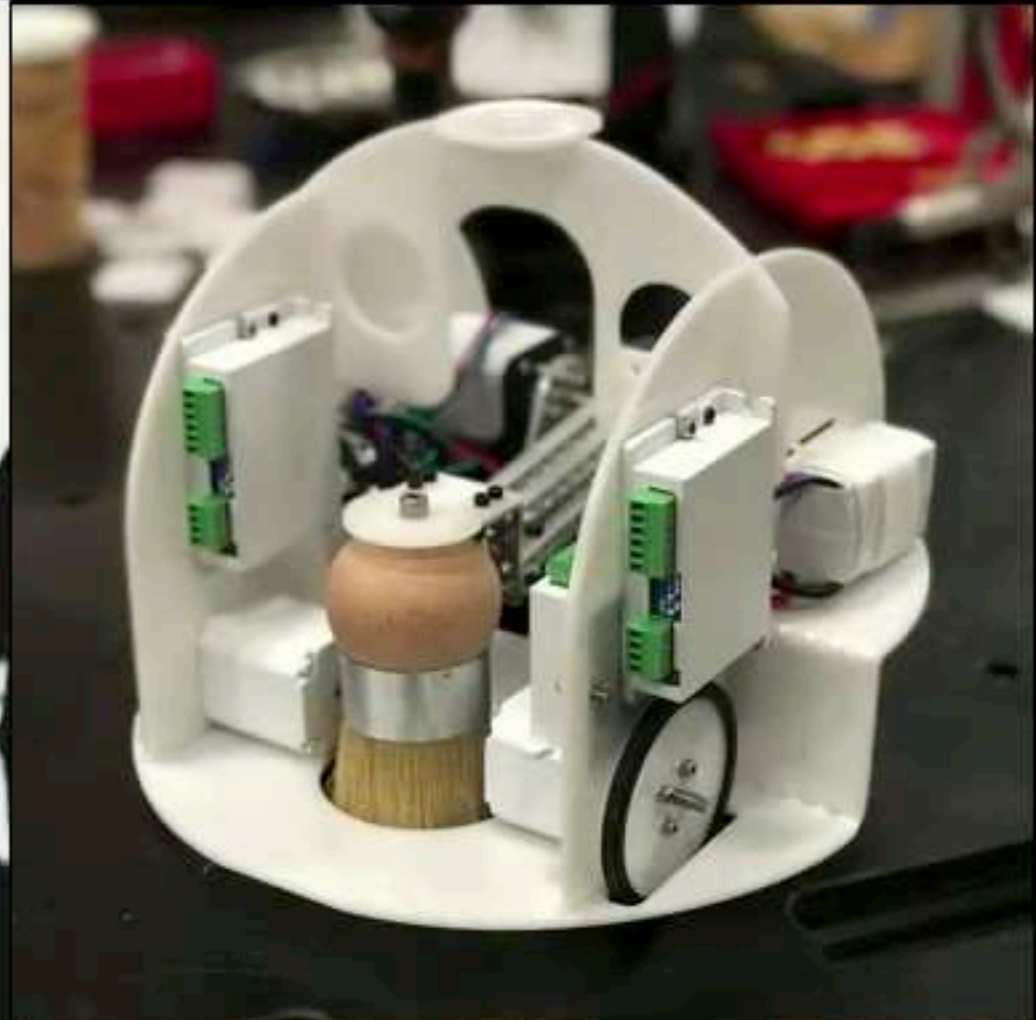




# Drawing Operations Unit Generation\_3













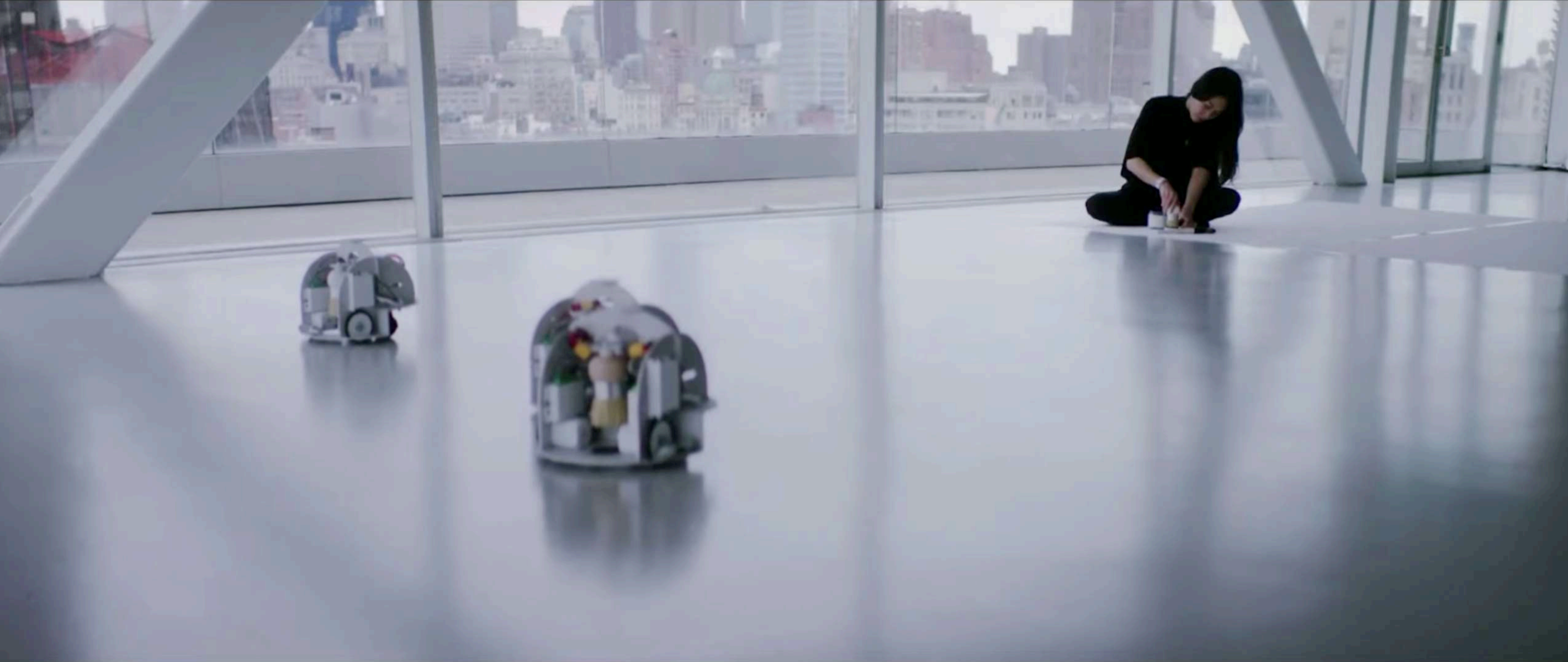


## Bell Labs

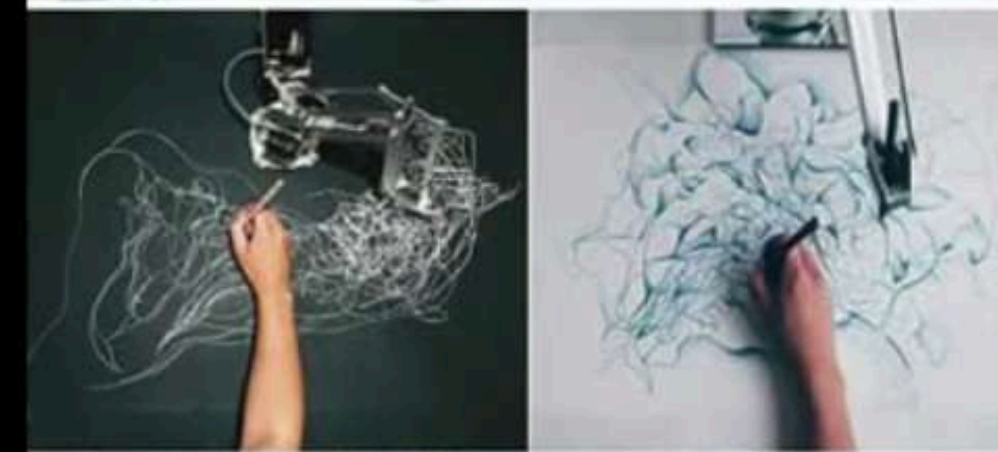
Bell Labs has teamed up with a group of resident artists to explore the emotional and social elements of machine-human interactions.











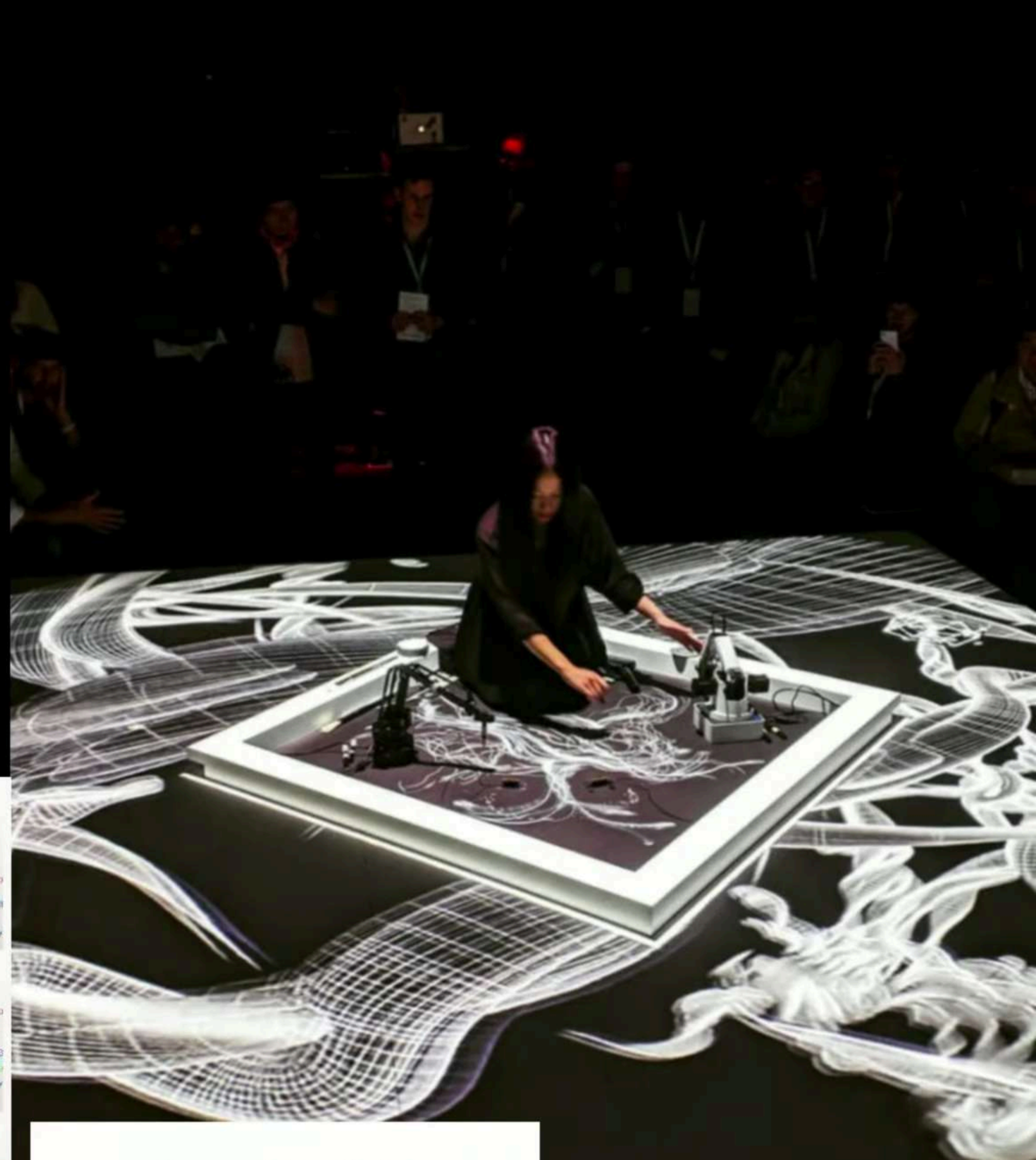
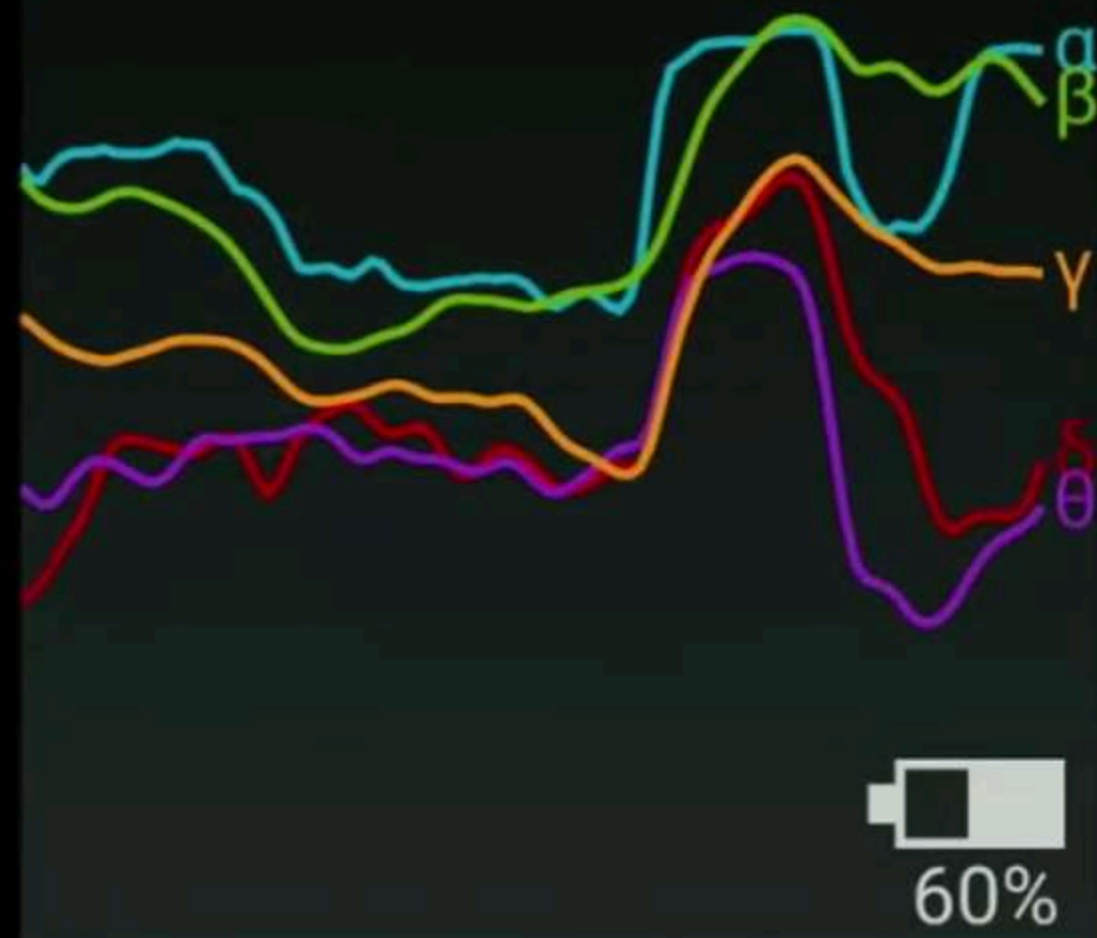
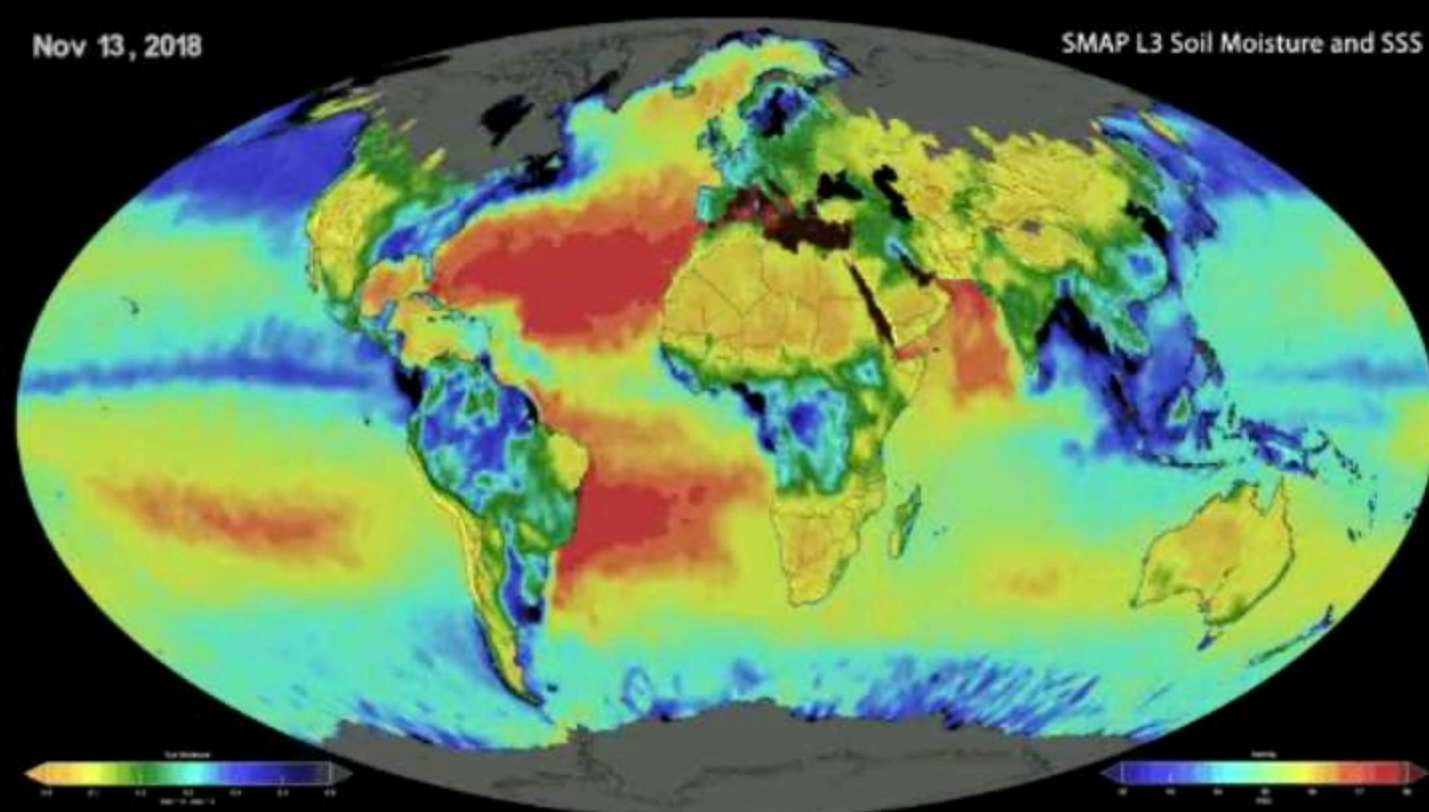




Delta 46.4dB  
 Theta 42.1dB  
 Alpha 84.2dB  
 Beta 79.3dB  
 Gamma 63.6dB

Nov 13, 2018

SMAP L3 Soil Moisture and SSS



$$S_1 + D_2 * E_3$$

§ Artist + Drawing operations Unit Gen3 Live Autonomous System + Environmental (Bio)Metrics